

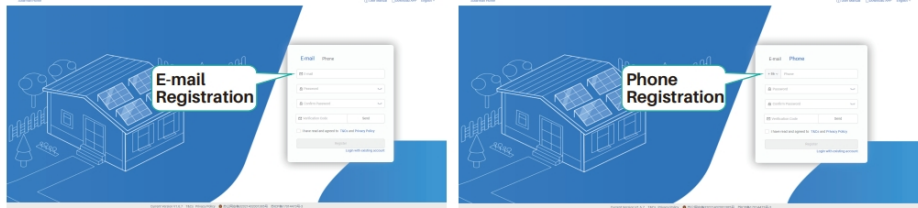
Quick Guide for Connecting your Battery System to WI-FI on your PERSONAL COMPUTER

This quick guide describes how to link your battery system to the online platform on your **Personal Computer (PC)**. The online platform provides remote service for monitoring and diagnosing your battery system.

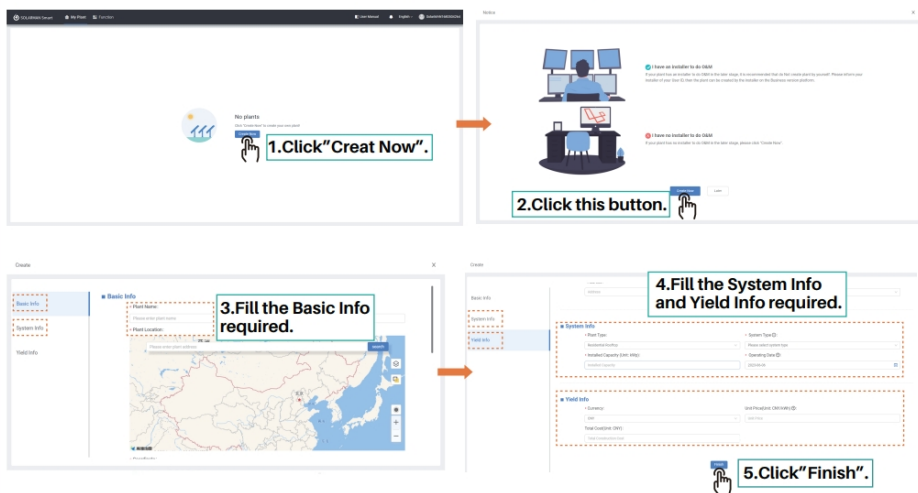
Note: Make sure the battery system is **POWER ON** when you try to connect it to Wi-Fi.

STEP 1 - Registration and Login

- Go to Solarman website <https://home.solarmanpv.com/login>
- Choose **E-mail** or **Phone** number to register an account:

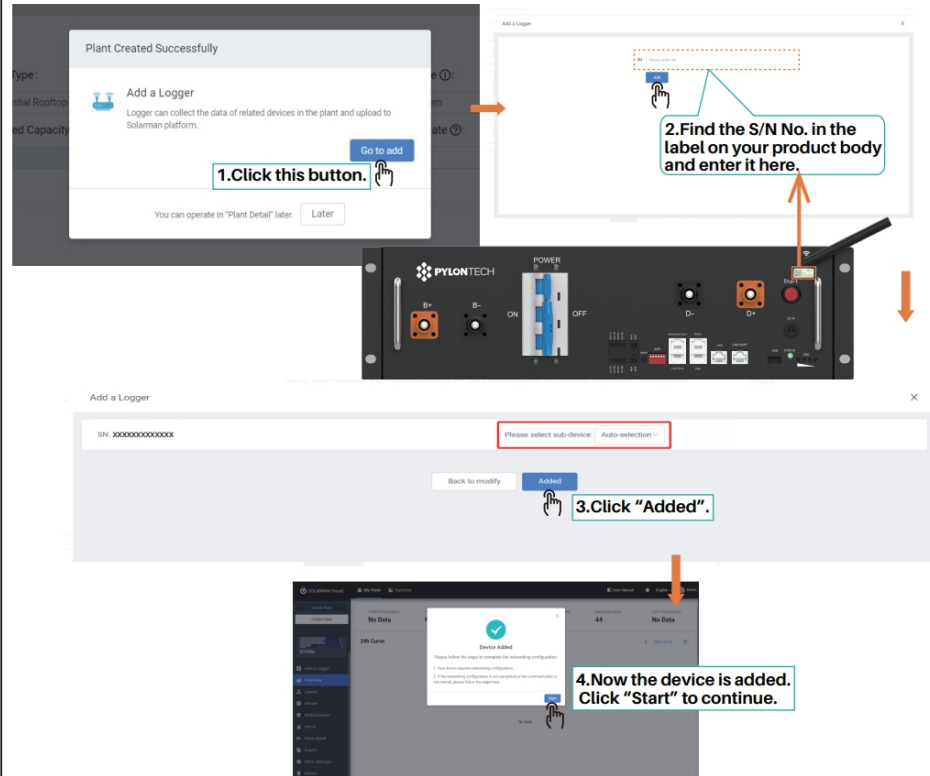


- Create a new plant according to the following steps:



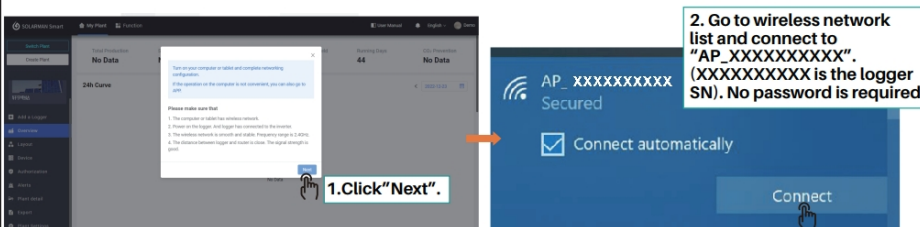
STEP 2 - Add a Logger

- After the plant creation, the system will prompt to add a logger. Here are the steps to follow:

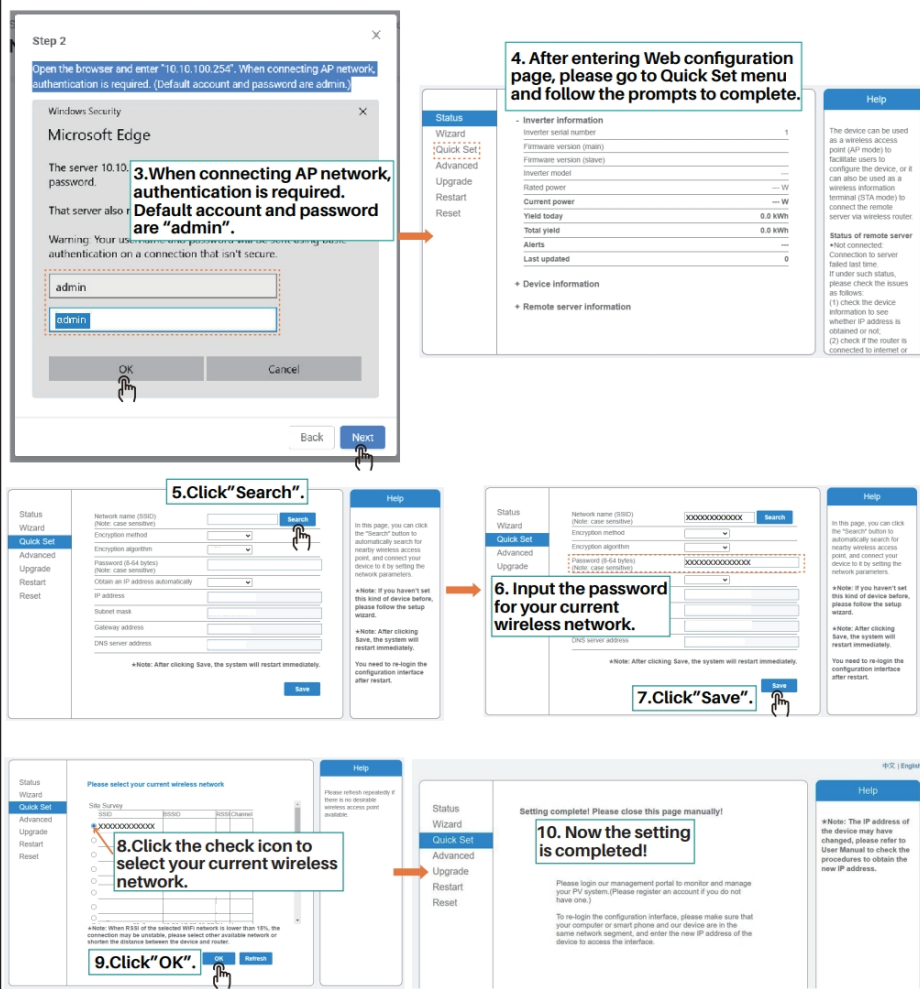


STEP 3 - Network Configuration

- Follow the steps below for logger network configuration.

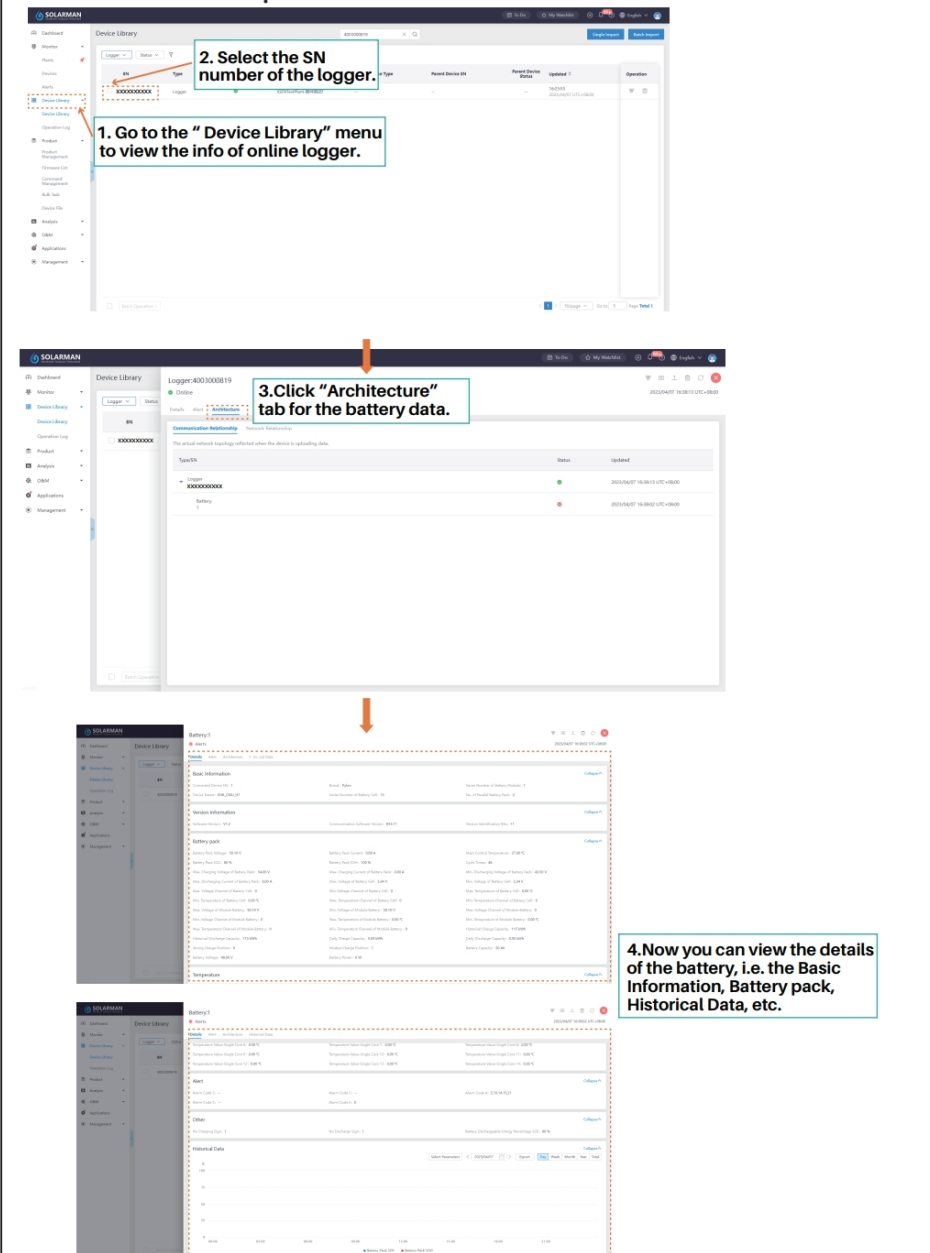


- Open the browser and enter "10.10.100.254".



STEP 4 - Battery Information Check

- After the logger is connected to the Internet, return to the WiFi platform interface



Quick Guide for Connecting your Battery System to WI-FI on your MOBILE DEVICE

This quick guide describes how to link your battery system to the online platform on your **Mobile Device** (suitable for Android and iOS). The online platform provides remote service for monitoring and diagnosing your battery system.

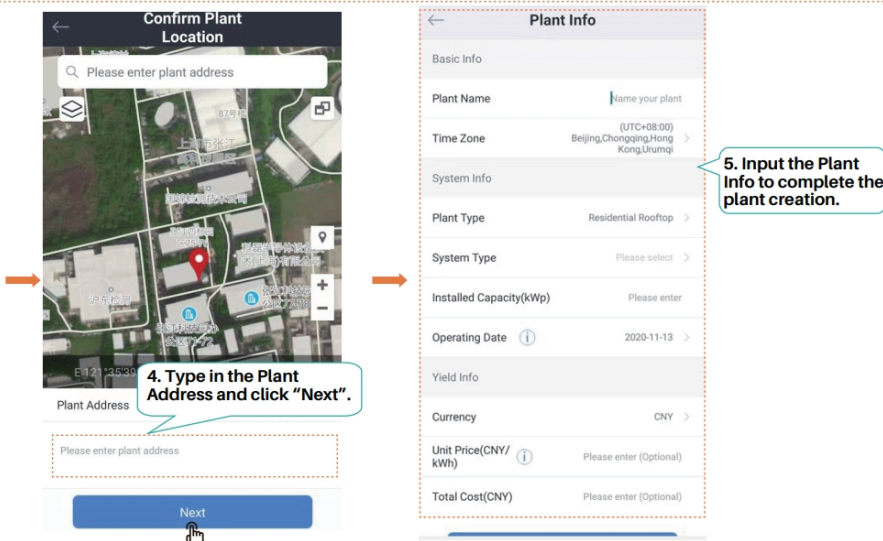
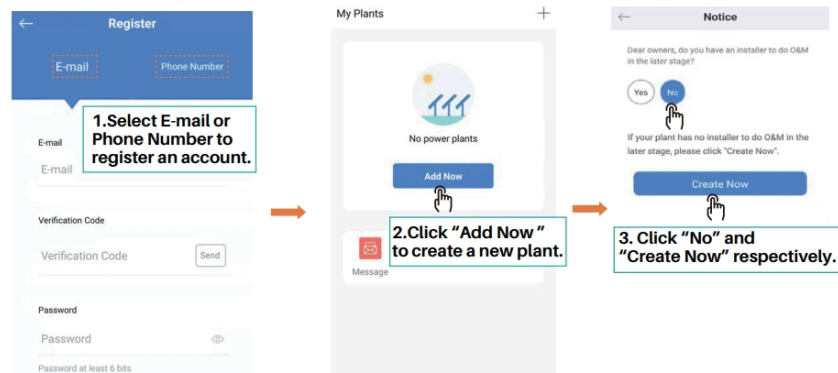
Note: Make sure the battery system is **POWER ON** when you try to connect it to Wi-Fi.

STEP 1 - Registration and Login

a. Download 'SOLARMAN Smart' APP from App Store (iOS installation as an example). And open this APP.

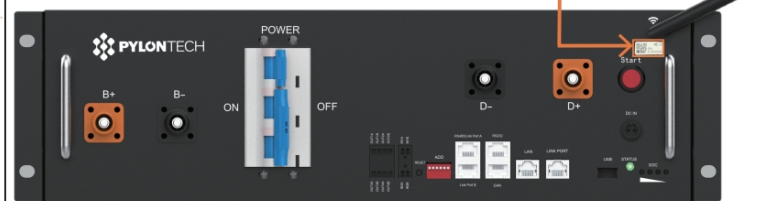
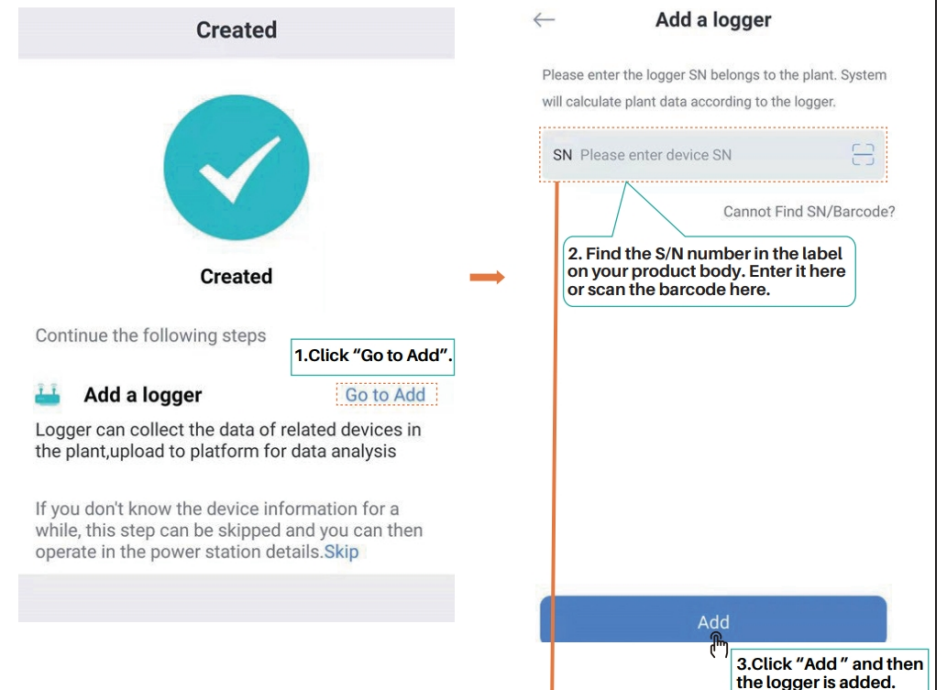


b. Finish the registration and create a new power plant.



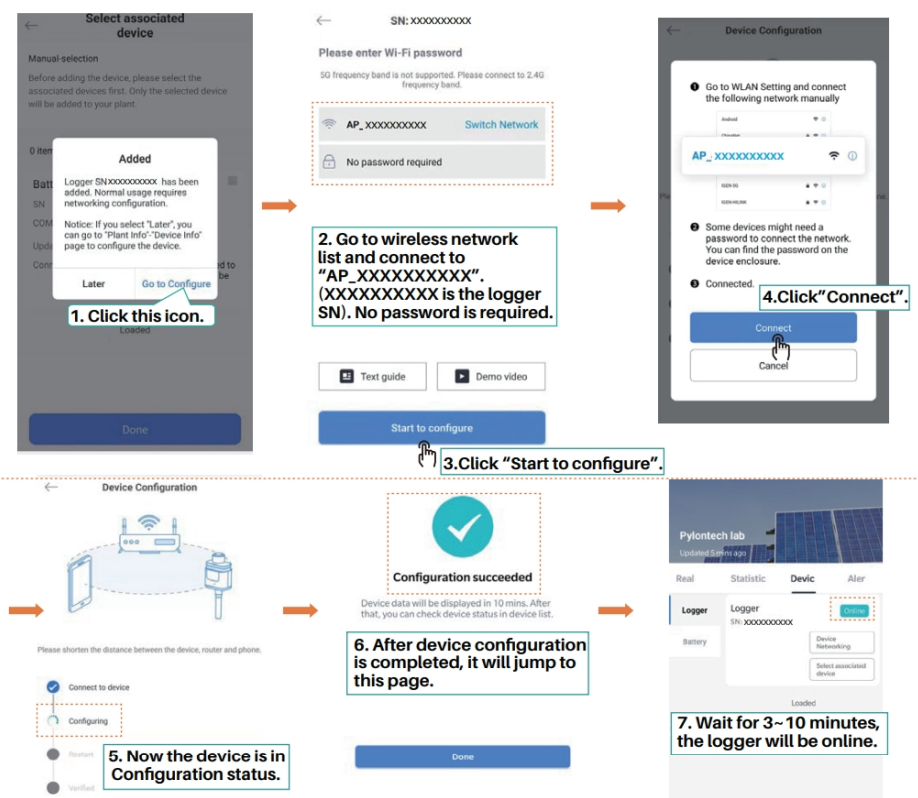
STEP 2 - Add a Logger

c. After the plant creation, continue to add a logger as follows:



STEP 3 - Network Configuration

d. After the logger is added, you'll be prompted to configure the network.



STEP 4 - Battery Information Check

e. After the logger is online, you can view the battery information.

